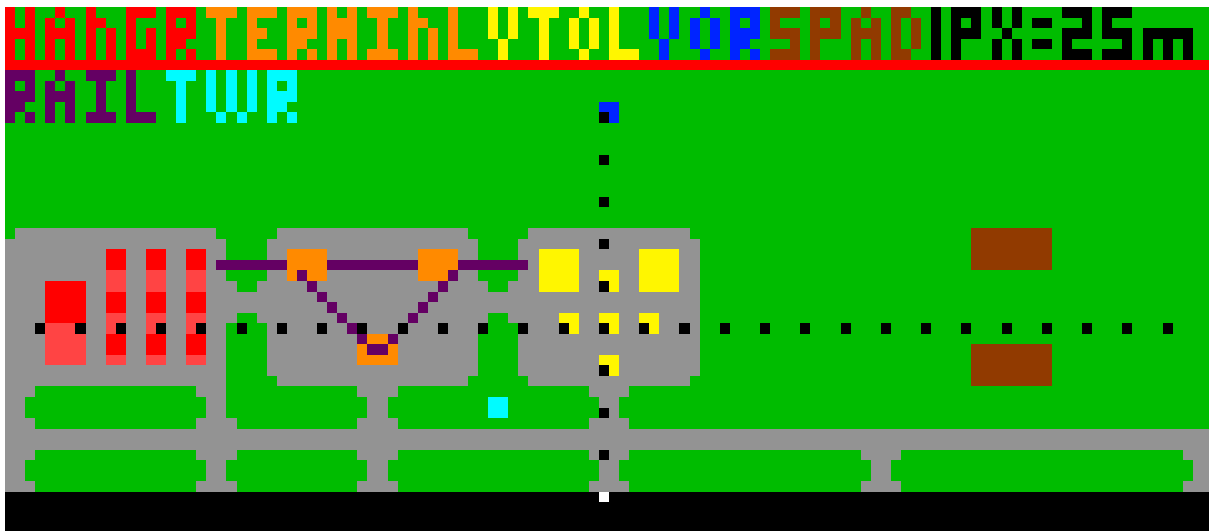


Sunrise Spaceport

By PeriapsisPrograde

Technical Details



(Black dot grid is in 100 meter increments)

- 1 runway; heading 090/270; 3000 m; lighted at night; no PAPI/VASI
- Main taxiway ALPHA, 100 m north of runway
- 6 runway/taxiway connections; B1, B2, etc. from east to west
- 4 taxiway/facility connections; C1, C2, etc. from east to west
- 20 hangars in west facility; 3 25*50 m; 5 50*50 m; 2 100*100 m
- 3 passenger terminals in central facility; 75*100 m; 3 stories high each
- 7 VTOL pads; numbered 1 in center; 2-5 clockwise about center; 6, 7 large
- 2 STS launch pads; 1 km east of base center
- 1 control tower; between central and east facilities, and runway
- 1 VOR for instrument approaches; 500 m north; frequency 111.00
- 5 hangrail trains for personnel transport

VTOL frequencies are 111.x0, where x is the VTOL number

Runway ILS frequencies are 111.80