

Cape Canaveral - VOR KSCX, 112.70MHz, 500km Range

Earth: 80.675°W, 28.521°N

Runways:

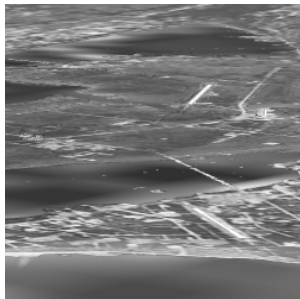
Runway 33/15:	134.20/134.20MHz	Length: 5277m
Runway 31/13:	132.60/132.60MHz	Length: 3136m

VTOL Pads:

Pad 1:	128.10MHz
Pad 2:	128.20MHz
Pad 3:	132.05MHz
Pad 4:	132.15MHz
Pad 5:	132.25MHz
Pad 6:	132.35MHz
Pad 7:	132.45MHz
Pad 8:	132.55MHz
Pad 9:	132.65MHz
Pad 10:	132.75MHz
Pad 11:	N/A

Extra Information:

Facilities for vertical launch vehicles, pads 39A and 39B. Main US Space Shuttle landing facility.



Datacard by Epsilon